



# Yellow Medicine River Demo Site

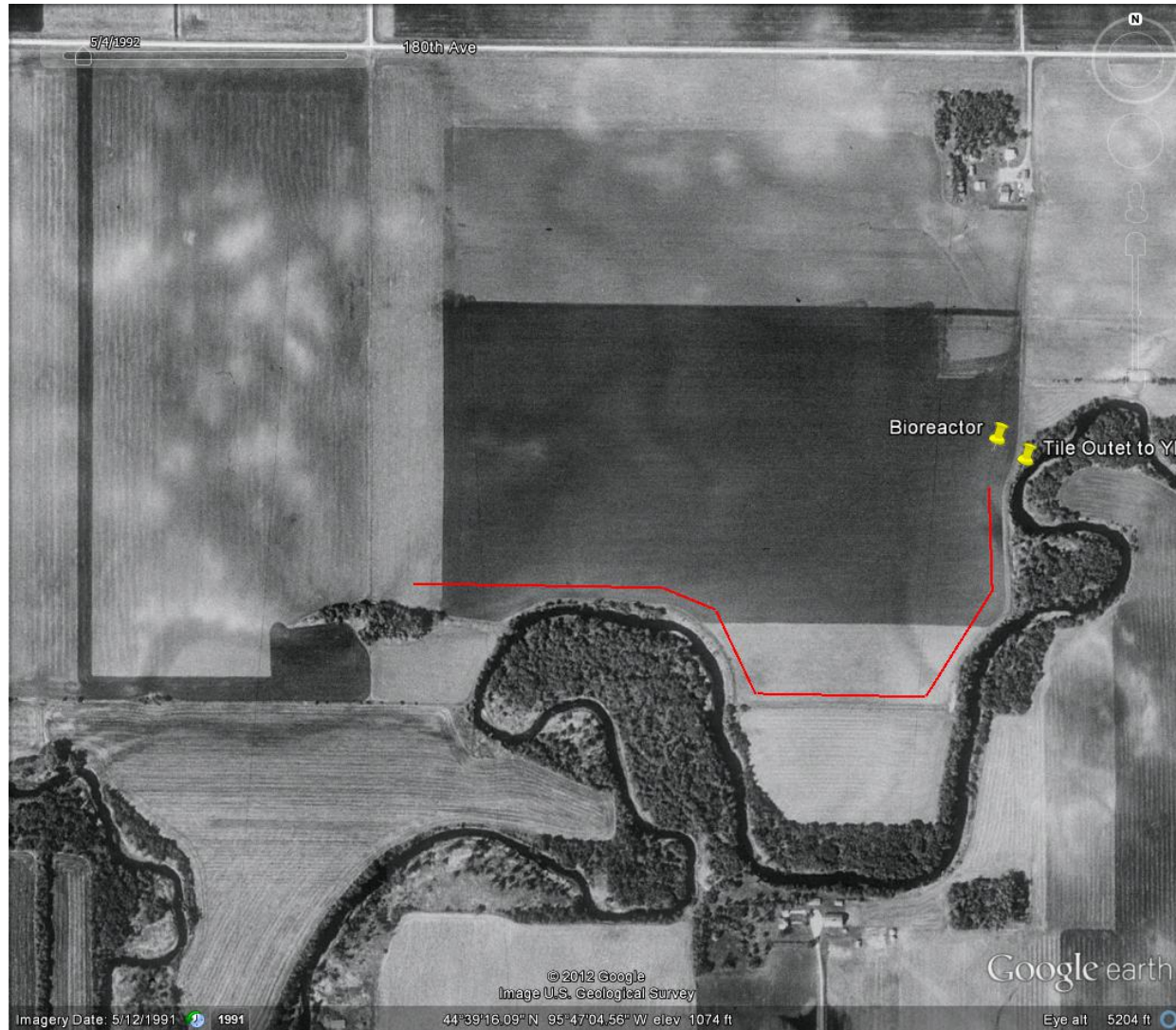
- Background: Water Issues
  - Agriculture's contribution to sediment and nutrient loads
  - Somewhere between 30-80%
- Easier to work with 30%,
- 80% is overwhelming.
- Challenges, Solutions, then Take Action:
  - Identify the problem, determine solution, fund it, act on it, then verify the results.



# Yellow Medicine River Demo Site

- Avoid giving false hopes
- Avoid finding a landscape wide solution
- Be prepared to adapt
- Learn from your mistakes

# 1991 Flyover



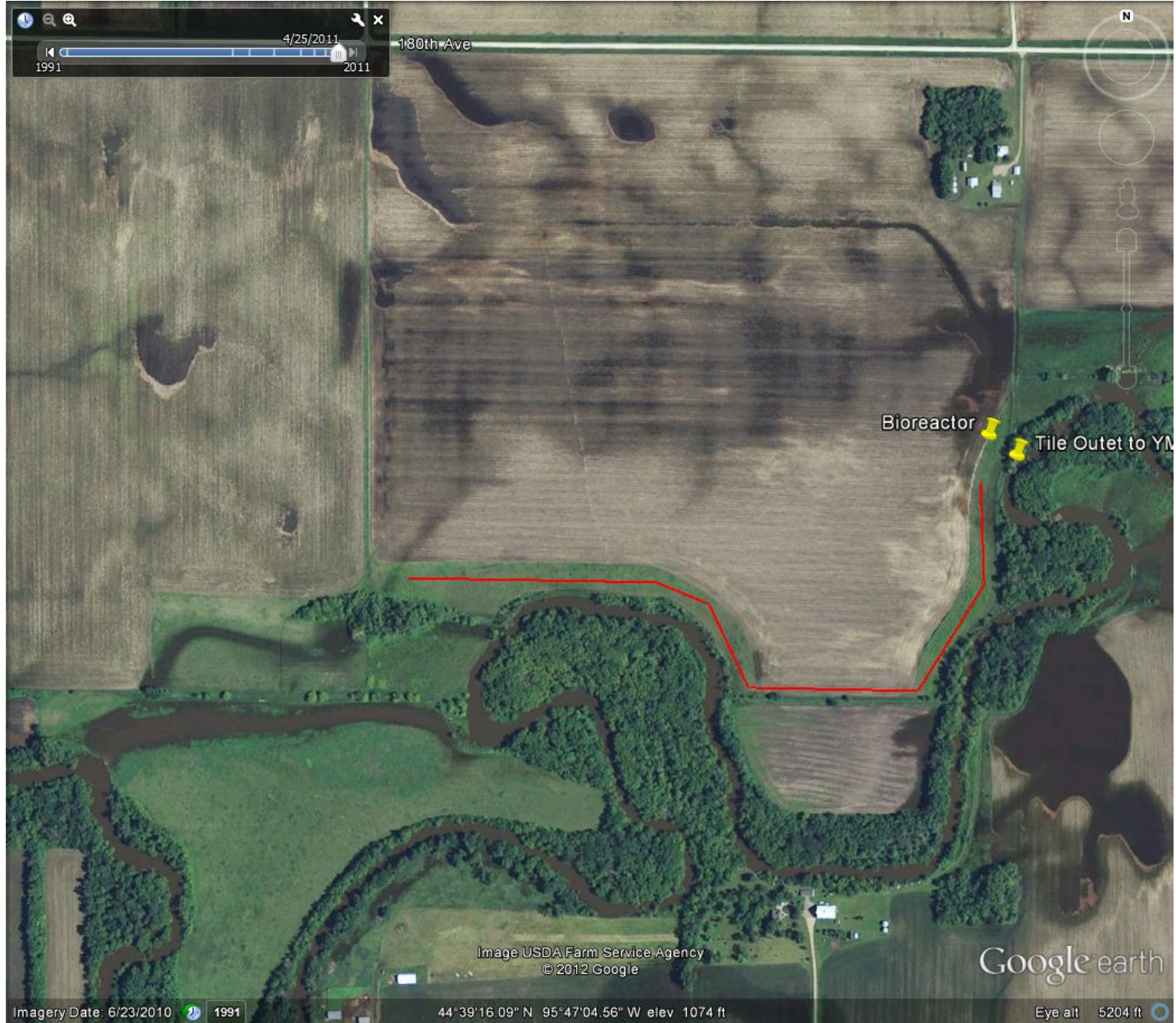


# 2003 Flyover

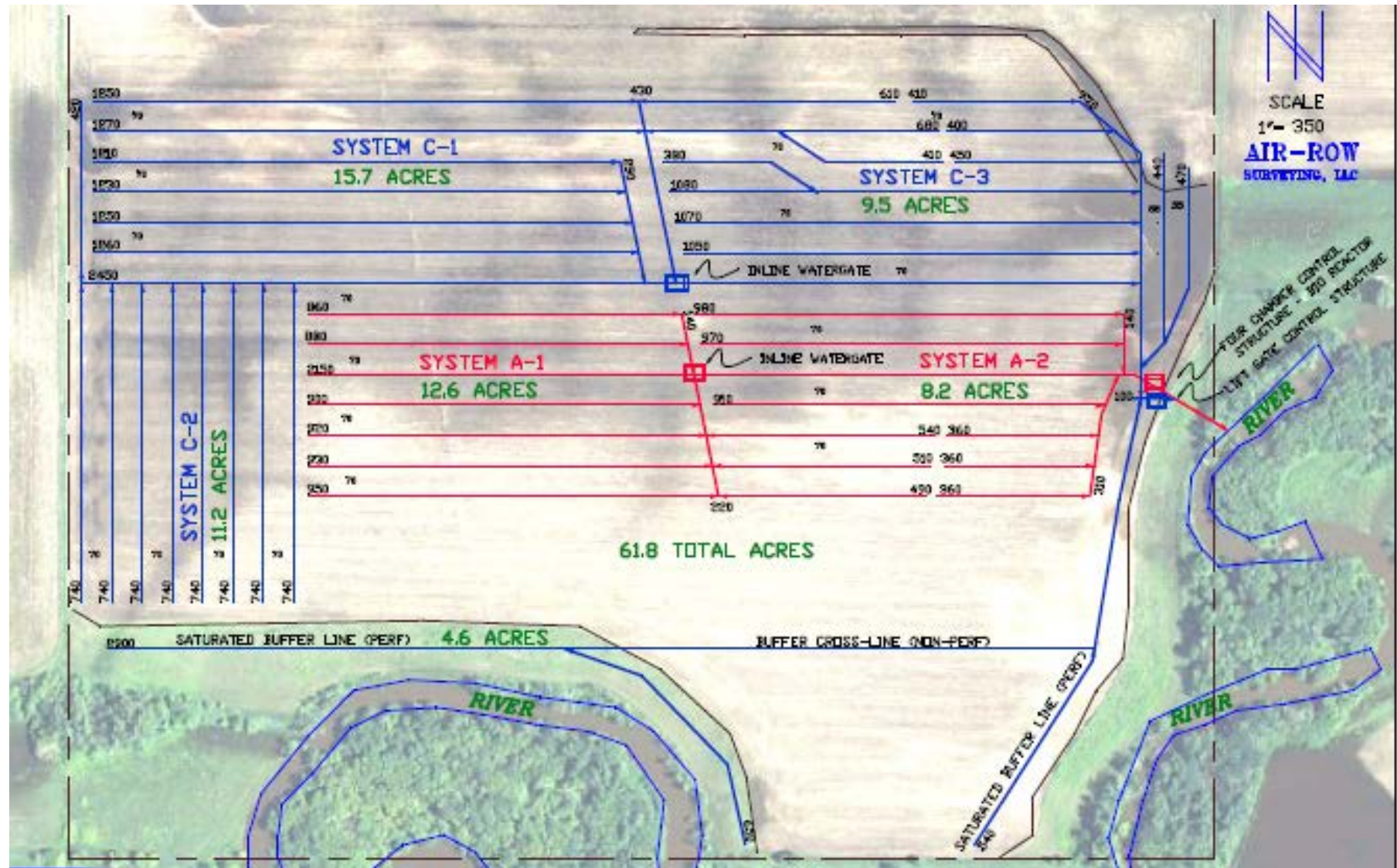




# Spring 2011









# Hold your questions for the field.

- Glad you're here, see you at the site
- Check out the new floodplain, and tile outlet.
- Light supper back here at the Casino around 5-5:30.
- We'll have a Resource Fair with supper.
- Big thanks to all the cooperators and supporters.